

## Dry Ice Blasting is Clean and Safe

- Dry ice is an approved medium by the EPA, USDA & FDA, and is non-toxic, non-hazardous and inhibits mold & bacteria growth
- Dry ice blasting has been effectively used in EPA, USDA, FDA, AIB and GFSI inspected/certified facilities
- Dry ice blasting is safe to use with food processing equipment
- Dry ice blasting does not release harmful gases into the atmosphere
- Dry ice blasting does not generate secondary waste
- Dry ice blasting is safe and non-toxic (once particles impact the surface they dissipate into the atmosphere)
- Dry ice blasting reduces or eliminates employee exposure to (and corporate liability from) the use of dangerous chemical cleaning agents

## Other cleaning methods can be toxic

- Sand, soda, or water blasting can leave toxic secondary waste to be cleaned up in addition to the toxic substrate
- Sand, soda, or water blasting can create downstream contamination that effects surrounding installations
- Soda blasting can kill surrounding vegetation
- Chemical and solvent cleaning methods are toxic, which creates toxic waste to be disposed of
- Workers are exposed to potentially harmful substances through the use of chemicals and solvents



## Completely Environmentally Friendly

In addition to being clean and safe, it is also important to remember that dry ice is obtained as a byproduct of other industrial processes - i.e. it is made from reclaimed CO2. It does not produce CO2 or add CO2 to the atmosphere and therefore does not contribute to the greenhouse effect.

**Dry ice blasting is truly, and completely, environmentally friendly!**

## PENN MOBILE LUBE & WASH

### Other Services Available

- HIGH PRESSURE POWER WASHING
- TRUCK & TRAILER WASHING
- HEAVY EQUIPMENT WASHING
- HOUSE WASHING
- FLEET MAINTENANCE



## PENN MOBILE DRY ICE BLASTING

571 Phineyville Rd, Ringtown, PA 17967

[www.pennmobiledryiceblasting.net](http://www.pennmobiledryiceblasting.net)

e-mail: [Boblex@ptd.net](mailto:Boblex@ptd.net)

Telephone: 570-889-5190

Fax: 570-889-4330



PA # 053606

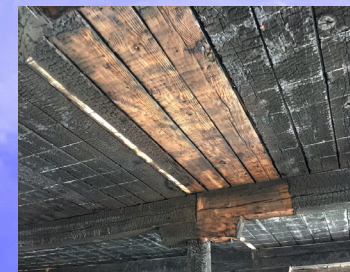
# PENN MOBILE DRY ICE BLASTING

[www.pennmobiledryiceblasting.net](http://www.pennmobiledryiceblasting.net)

**570-889-5190**

**NON-ABRASIVE  
NON-FLAMMABLE  
NON-CONDUCTIVE CLEANING AGENT**

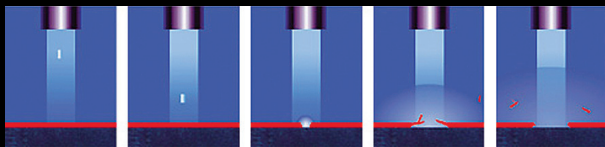
**APPROVED BY FDA / EPA / USDA**





## What is Dry Ice Blasting?

Dry ice blasting is similar to sand blasting, plastic bead blasting, or soda blasting where a medium is accelerated in a pressurized air stream to impact a surface to be cleaned or prepared. But that's where the similarity ends.



Instead of using hard abrasive media to grind on a surface (and damage it), dry ice blasting uses soft dry ice, accelerated at supersonic speeds, and creates mini-explosions on the surface to lift the undesirable item off the underlying substrate.

## Dry ice blasting has many unique and superior benefits over traditional blasting media.

### Dry ice blasting:

- is a non-abrasive, nonflammable and nonconductive cleaning method
- is environmentally-friendly and contains no secondary contaminants such as solvents or grit media
- is clean and approved for use in the food industry
- allows most items to be cleaned in place without time-consuming disassembly
- can be used without damaging active electrical or mechanical parts or creating fire hazards
- can be used to remove production residues, release agents, contaminants, paints, oils and biofilms
- can be as gentle as dusting smoke damage from books or as aggressive as removing weld slag from tooling
- can be used for many general cleaning applications

Dry ice blasting uses compressed air to accelerate frozen carbon dioxide (CO<sub>2</sub>) "dry ice" pellets to a high velocity. A compressed air supply of 80 PSI/50 scfm can be used in this process. Dry ice pellets can be made on-site or supplied. Pellets are made from food grade carbon dioxide that has been specifically approved by the FDA, the EPA and the USDA.

Carbon dioxide is a non-poisonous, liquefied gas, which is both inexpensive and easily stored at work sites.

## How does your current cleaning process compare?

Dry ice blasting is the superior alternative to Media Blasting, Solvents, Water, Steam, Hand Cleaning, Chemicals and Abrasives.

If you are experiencing prolonged downtime, high costs for secondary waste disposal or costly wear and tear on equipment it's time to evaluate your cleaning process and measure it against the dry ice blasting process.

Dry ice blasting is an environmentally-, employee- and equipment-friendly alternative to most conventional surface preparation and cleaning methods. Compare your current cleaning process to the dry ice blast cleaning process and see how Penn Mobile can add value to your business through improved productivity, reduced waste and lower costs.

Cleaning Method	Secondary Waste	Electrically Conductive	Abrasive	Toxic	Effectiveness
Dry Ice	No	No	No	No	Excellent
Sand Blasting	Yes	No	Yes	*	Good
Soda Blasting	Yes	No	Yes	*	Good
Water Blasting	Yes	Yes	No	*	OK
Solvents/Chemicals	Yes	N/A	No	Yes	Limited
Power Tools	No	N/A	Yes	N/A	Limited
Hand Tools	No	N/A	Yes	N/A	Limited

*\* Upon contact, traditional blasting materials become contaminated when used to clean hazardous substances and objects. These blasting materials are also then classified as toxic waste and require appropriate safe disposal.*

## PENN MOBILE DRY ICE BLASTING

